



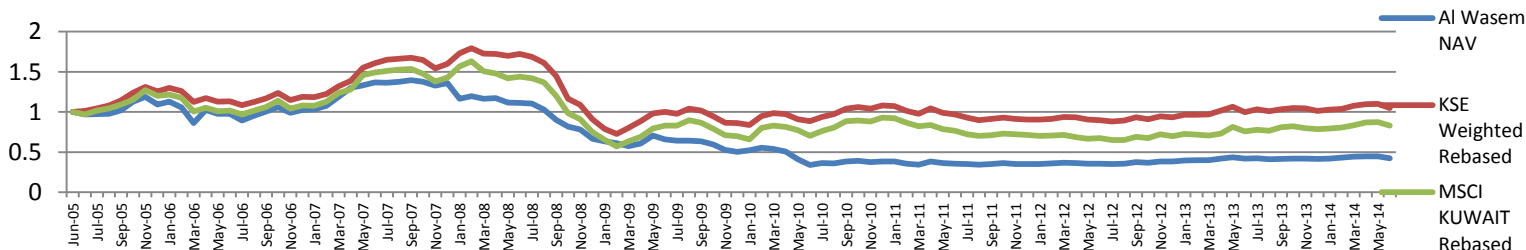
Performance Fact Sheet: As of June 2014

PERFORMANCE: Ending June, 2014

Fund NAV	KD 0.4240
Fund MTD	-4.84%
Since Inception	-27.60%

Fund Size	KD 2,165,286
Fund YTD	2.44%
Dividends	KD 0.300 per unit on 20/08/2007

PERFORMANCE: June 2005 – June 2014



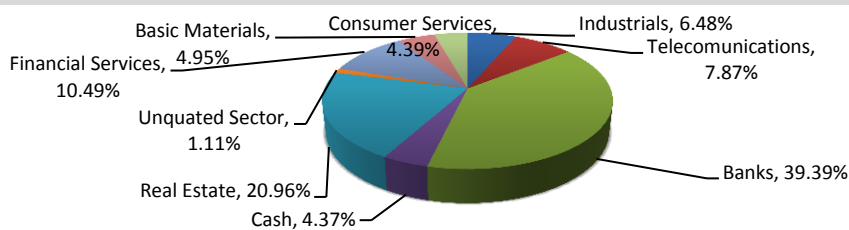
PERFORMANCE: Ending June, 2014 (not annualized if less than 1 year)

	MTD	YTD	1 Year	3 years	Since Inception
Al Wasm Fund	-4.84%	2.44%	1.32%	19.80%	-27.60%
KSE W-Index	-4.73%	3.73%	5.09%	8.23%	4.92%
MSCI-Kuwait	-5.79%	4.64%	8.77%	7.26%	-17.65%

MONTHLY RETURN (%)

Years	Jan	Feb	Mar	Apr	May	Jun	Jul	Aug	Sep	Oct	Nov	Dec	Annual	KSE W.
2005						-3.15	0.36	0.65	4.27	10.51	5.38	-7.89	9.42	25.58
2006	2.99	-6.28	-18.52	19.23	-4.93	0.05	-8.59	6.70	5.57	5.40	-6.59	3.62	-6.29	-5.43
2007	0.86	4.20	10.21	9.32	2.55	2.75	-0.22	0.88	1.34	-1.50	-3.47	2.36	32.44	34.47
2008	10.03	2.71	-2.74	0.81	-4.83	-0.34	-0.77	-6.88	-12.33	-9.31	-4.29	-14.62	-36.90	-43.12
2009	-5.00	-3.89	-5.55	5.11	16.56	-6.56	-2.79	0.37	-1.54	-6.27	-11.08	-4.28	-24.33	-5.15
2010	3.38	6.48	-2.73	-7.22	-18.82	-17.12	7.88	-1.68	6.67	2.62	-3.87	2.17	-23.80	25.51
2011	-0.57	-7.04	-3.29	11.25	-4.61	-3.09	-0.79	-2.58	2.71	3.18	-2.92	-0.26	-8.82	-16.22
2012	0.16	2.44	2.25	-1.02	-2.62	0.65	-1.77	1.67	5.07	-1.49	4.11	-0.22	9.28	2.97
2013	3.25	0.74	0.46	4.58	4.31	-4.28	1.34	-3.42	1.19	1.54	-0.29	-1.37	7.91	8.43
2014	1.68	2.15	3.53	0.65	-0.54	-4.84								

SECTOR BREAKDOWN



TOP 5 HOLDINGS

National Bank of Kuwait

Mabane Company (S.A.K.Closed)

MOBILE TELECOMMUNICATIONS COMPANY K.S.C

ACICO industries Co. (K.S.C.Closed)

Ahli United Bank B.U.C

MARKET REVIEW

Total market Cap in KSE reached KD 31,328 Billion, less by KD 1,661 million less by 5% in comparison to June. While the three main indices underperform due to sell off that hit the whole market. This was mainly heightened by the uncertainty in the escalated tensions regionally and locally. None the less the market still lacks catalysts. Daily Average volumes have been reduced substantially by the end of the month to be around KD 20 million, retreating by 8.7%.

PARAMETERS

Fund	Al Wasm Fund
Ticker	KFIWASM KK
Benchmark	MSCI- Kuwait
Analysis Start	June 2005

FUND OBJECTIVE: The fund seeks to achieve medium to long-term capital appreciation in shares of companies listed on the Kuwait Stock Exchange and shares of companies seeking listing. The Fund manager, in achieving the Fund's objectives may also invest in shares of companies not listed on the Kuwait Stock Exchange up-to 20% of the Fund Net Asset Value.

FUND DETAILS

Fund Capital:	Variable
Fund Capital Range:	KD 5 Million to KD 50 Million
Fund structure:	Open-ended
First public Offering:	22/06/2005

PORTFOLIO MANAGEMENT

Fund manager	Kuwait Finance and Investment Company
Custodian	Gulf Clearing Company
Auditors	KPMG Safi Al-Mutawa & Partners
Fund Currency	Kuwaiti Dinars

Fees & Expenses

Management Fees:	1.75% per annum
Subscription fees:	2%
Minimum Subscription:	1000 Units
Subscription/Redemption:	Weekly



Legal Disclaimer

Kuwait Finance & Investment Company Mutual Funds are not deposits in, or obligations of, and are not guaranteed by any financial institutions. Mutual funds are subject to investment risk. The investment return and principal value of an investment in a mutual fund will fluctuate, and an investor's shares when redeemed may be worth more or less than their original cost. Past performance does not guarantee future results.

Contact Information:

Assets Management Division
Tel: +965 1889000
Email: kfic_investment@kfic-kw.com