



## Performance Fact Sheet: As of October 2012

### PERFORMANCE: Ending October, 2012

Fund NAV **KD 0.369**

Fund MTD **▼ -1.49%**

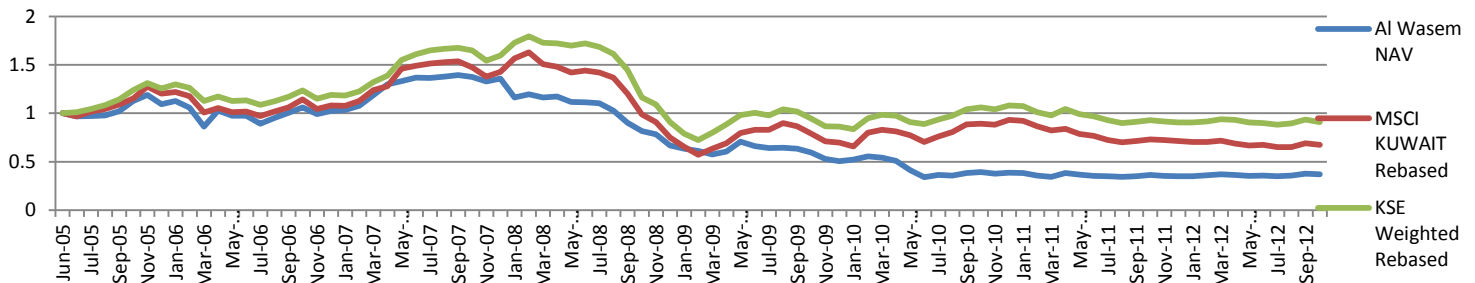
Since Inception **▼ -33.08%**

Fund Size **KD 1,846,234**

Fund YTD **▲ 5.20%**

Dividends **KD 0.300 per unit on 20/08/2007**

### PERFORMANCE: June 2005 – October 2012



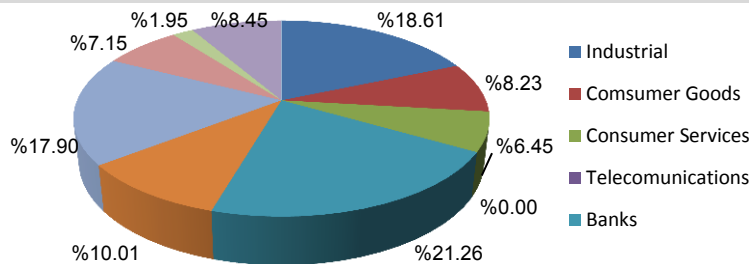
### PERFORMANCE: Ending October, 2012 (not annualized if less than 1 year)

	YTD	1 Year	3 years	5 years	Since Inception
Al Wasm Fund	5.20%	1.87%	-37.78%	-51.30%	-33.08%
MSCI-Kuwait	-5.52%	-7.65%	-14.41%	-54.20%	-32.49%
KSE W-Index	0.31%	-2.04%	-3.76%	-44.86%	-9.13%

### MONTHLY RETURN (%)

Years	Jan	Feb	Mar	Apr	May	Jun	Jul	Aug	Sep	Oct	Nov	Dec	Annual	MSCI-K
2005						-3.15	0.36	0.65	4.27	10.51	5.38	-7.89	9.42	20.11
2006	2.99	-6.28	-18.52	19.23	-4.93	0.05	-8.59	6.70	5.57	5.40	-6.59	3.62	-6.29	-9.95
2007	0.86	4.20	10.21	9.32	2.55	2.75	-0.22	0.88	1.34	-1.50	-3.47	2.36	32.44	31.96
2008	10.03	2.71	-2.74	0.81	-4.83	-0.34	-0.77	-6.88	-12.33	-9.31	-4.29	-14.62	-36.90	-47.55
2009	-5.00	-3.89	-5.55	5.11	16.56	-6.56	-2.79	0.37	-1.54	-6.27	-11.08	-4.28	-24.33	-6.73
2010	3.38	6.48	-2.73	-7.22	-18.82	-17.12	7.88	-1.68	6.67	2.62	-3.87	2.17	-23.81	33.35
2011	-0.57	-7.04	-3.29	11.25	-4.61	-3.09	-0.79	-2.58	2.71	3.18	-2.92	-0.26	-8.82	-23.25
2012	0.16	2.44	2.25	-1.02	-2.62	0.65	-1.77	1.67	5.07	-1.49				

### SECTOR BREAKDOWN



### TOP 5 HOLDINGS

- Commercial Facilities Company
- National Bank of Kuwait
- Kuwait Food Company (AMERICANA)
- Gulf Cable And Electrical Industries Company
- Boubyan Petrochemicals Company

### MARKET REVIEW

A Couple of psychological factors mainly affected badly on the market dealers were; an escalation in the political speeches by the opponents for the amendments on the election law, which drove them to protest by marches and express their position. Therefore, it required the intervention of the security forces to break up these marches for security reasons. In addition to the concurrence of Eid al-Adha holiday, which usually what the market faces before holidays of intense liquefaction processes by the dealers for the fear of any developments might occur during these holidays.

### PARAMETERS

Fund	Al Wasm Fund
Ticker	KFIWASM KK
Benchmark	MSCI- Kuwait
Analysis Start	June 2005

### FUND OBJECTIVE:

The fund seeks to achieve medium to long-term capital appreciation in shares of companies listed on the Kuwait Stock Exchange and shares of companies seeking listing. The Fund manager, in achieving the Fund's objectives may also invest in shares of companies not listed on the Kuwait Stock Exchange up-to 20% of the Fund Net Asset Value.

### FUND DETAILS

Fund Capital:	Variable
Fund Capital Range:	KD 5 Million to KD 50 Million
Fund structure:	Open-ended
First public Offering:	22/06/2005

### PORTFOLIO MANAGEMENT

Fund manager	Kuwait Finance and Investment Company
Custodian	Gulf Clearing Company
Auditors	KPMG Safi Al-Mutawa & Partners
Fund Currency	Kuwaiti Dinars

### Fees & Expenses

Management Fees:	1.75%per annum
Subscription fees:	2%
Minimum Subscription:	1000Units
Subscription/Redemption:	Weekly



### Legal Disclaimer

Kuwait Finance & Investment Company Mutual Funds are not deposits in, or obligations of, and are not guaranteed by any financial institutions. Mutual funds are subject to investment risk. The investment return and principal value of an investment in a mutual fund will fluctuate, and an investor's shares when redeemed may be worth more or less than their original cost. Past performance does not guarantee future results.

### Contact Information:

Assets Management Division  
Tel: +965 1889000  
Email: kfic\_investment@kfic-kw.com