



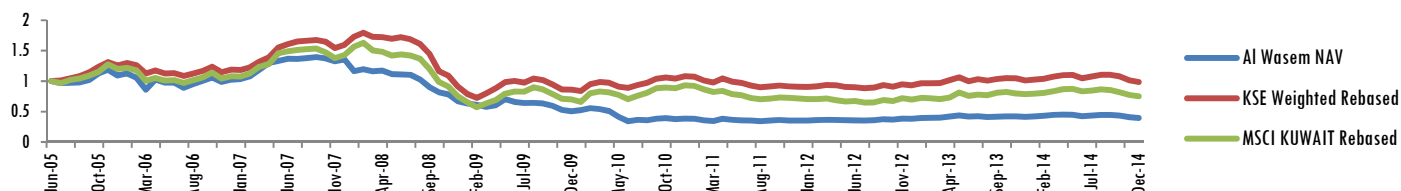
Performance Fact Sheet: As of December 2014

PERFORMANCE: Ending Dec, 2014

Fund NAV	KD 0.396
Fund MTD	-2.91%
Since Inception	-30.45%

Fund Size	KD 2,166,199
Fund YTD	-4.45%
Dividends	KD 0.300 per unit on 20/08/2007

PERFORMANCE: June 2005 – November 2014



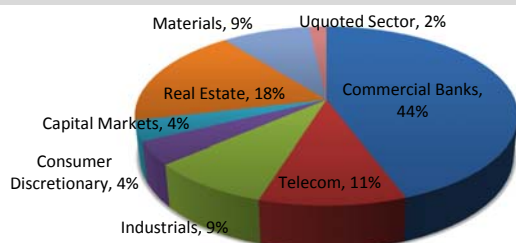
PERFORMANCE: Ending December, 2014 (not annualized if less than 1 year)

	MTD	YTD	1 Year	3 years	Since Inception
Al-Wasm Fund	-2.91%	-4.45%	-4.45%	12.68%	-30.45%
KSE W-Index	-3.44%	-3.09%	-3.09%	8.20%	-1.98%
MSCI-Kuwait	-4.85%	-6.57%	-6.57%	2.89%	-26.48%

MONTHLY RETURN (%)

Years	Jan	Feb	Mar	Apr	May	Jun	Jul	Aug	Sep	Oct	Nov	Dec	Annual	KSE W.
2005						-3.15	0.36	0.65	4.27	10.51	5.38	-7.89	9.42	25.58
2006	2.99	-6.28	-18.52	19.23	-4.93	0.05	-8.59	6.70	5.57	5.40	-6.59	3.62	-6.29	-5.43
2007	0.86	4.20	10.21	9.32	2.55	2.75	-0.22	0.88	1.34	-1.50	-3.47	2.36	32.44	34.47
2008	10.03	2.71	-2.74	0.81	-4.83	-0.34	-0.77	-6.88	-12.33	-9.31	-4.29	-14.62	-36.90	-43.12
2009	-5.00	-3.89	-5.55	5.11	16.56	-6.56	-2.79	0.37	-1.54	-6.27	-11.08	-4.28	-24.33	-5.15
2010	3.38	6.48	-2.73	-7.22	-18.82	-17.12	7.88	-1.68	6.67	2.62	-3.87	2.17	-23.80	25.51
2011	-0.57	-7.04	-3.29	11.25	-4.61	-3.09	-0.79	-2.58	2.71	3.18	-2.92	-0.26	-8.82	-16.22
2012	0.16	2.44	2.25	-1.02	-2.62	0.65	-1.77	1.67	5.07	-1.49	4.11	-0.22	9.28	2.97
2013	3.25	0.74	0.46	4.58	4.31	-4.28	1.34	-3.42	1.19	1.54	-0.29	-1.37	7.91	8.43
2014	1.68	2.15	3.53	0.65	-0.54	-4.84	2.08	2.55	0.25	-2.45	-6.14	-2.91	-4.45%	-3.09%

SECTOR BREAKDOWN



TOP 5 HOLDINGS

National Bank of Kuwait
Kuwait Finance House
Zain
Ahli United Bank
Mabaneer

MARKET REVIEW

Ministry of Finance officials in Kuwait are estimating budget spending at KWD 19bn(USD 65.2bn) in the year starting next April. Abdul Samad (MB) said the estimates for the 2015/16 year envisaged the government running a budget deficit of KWD 2.8bn, before deducting from the reserve of Kuwait's Future Generations Fund (FGF), part of its sovereign wealth fund. Kuwait's oil minister mentioned that development projects will not be affected by the drop in oil price, adding that the government was looking into the possibility of cutting subsidies on fuel, water and electricity. According to the IIF, Kuwait should have ample resources to continue with their public spending plans and overall growth is expected to moderate to +3.4% in 2015, as compared to +4.1% in 2014. Fitch has also reaffirmed Kuwait as the least vulnerable to the plunge in oil prices due to their fiscal break-even oil price at USD 45/bbl.

PARAMETERS

Fund	Al Wasm Fund
Ticker	KFIWASM KK
Benchmark	MSCI- Kuwait
Analysis Start	June 2005

PORTFOLIO MANAGEMENT

Fund manager	Kuwait Finance and Investment Company
Custodian	Gulf Clearing Company
Auditors	KPMG Safi Al-Mutawa& Partners
Fund Currency	Kuwaiti Dinars

FUND OBJECTIVE:

The fund seeks to achieve medium to long-term capital appreciation in shares of companies listed on the Kuwait Stock Exchange and shares of companies seeking listing. The Fund manager, in achieving the Fund's objectives may also invest in shares of companies not listed on the Kuwait Stock Exchange up-to 20% of the Fund Net Asset Value.

FUND DETAILS

Fund Capital:	Variable
Fund Capital Range:	KD 5 Million to KD 50 Million
Fund structure:	Open-ended
First public Offering:	22/06/2005

Fees & Expenses

Management Fees:	1.25%per annum
Subscription fees:	2%
Minimum Subscription:	1000Units
Subscription/Redemption:	Weekly



Legal Disclaimer

Kuwait Finance & Investment Company Mutual Funds are not deposits in, or obligations of, and are not guaranteed by any financial institutions. Mutual funds are subject to investment risk. The investment return and principal value of an investment in a mutual fund will fluctuate, and an investor's shares when redeemed may be worth more or less than their original cost. Past performance does not guarantee future results.

Contact Information:

Assets Management Division
Tel: +965 1889000
Email: kfic_investment@kfic-kw.com