



Performance Fact Sheet

Oct, 2018

NAV KWD 0.4578

Performance	Fund	Benchmark	Concentrations	Fund	Benchmark
MTD	-0.56%	-1.67%	Total Holdings	17	156
QTD	-1.39%	-2.42%	Top 5 Holdings %	60%	48%
YTD	9.56%	7.06%	Cash Holdings	6.0%	N/A

Fund Size KWD 2.654 Mn

RISK METRICS	Fund	Benchmark
Volatility	25.52%	17.01%
Sharp Ratio	-0.149	-0.136
Tracking Error		15.25%
Information Ratio		0.254
Alpha (MTD)		3.89%
Beta (MTD)		0.961
Alpha (Annual)		0.007
Beta (Annual)		0.925
Risk Free Rate		2.75%

FUND OBJECTIVE:

The fund seeks to achieve medium to long-term capital appreciation in shares of companies listed on the Kuwait Stock Exchange and shares of companies seeking listing. The Fund manager, in achieving the Fund's objectives may also invest in shares of companies not listed on the Kuwait Stock Exchange up-to 10% of the Fund Net Asset Value.

PARAMETERS & FUND DETAILS

Fund manager
Kuwait Finance and Investment Company

Fund Manager's Management Fees:

1.25% per annum

Fund Manager's Incentive Fees:

10% for Over 10% Annual Return

Thomson Reuters Ticker

LP65038256

Bloomberg Ticker

KFIWASM KK

Benchmark

The Fund Does not Follow a specific Index; for performance comparison, KSE ALL SHARE MARKET INDEX TR (Since 01/04/2018) and MSCI KUWAIT INDEX are used

Custodian

Gulf Clearing Company

Fees: 0.075% P. A.

Investment controller

Gulf Clearing Company

Fees: 0.05% P. A.

Share Registrar

Gulf Clearing Company

Fees: KWD 1,000 P.A.

Auditors

Price Waterhouse Coopers (AlShatti & Co.)

Fees: KWD 2,500 P.A.

Fund Currency Kuwaiti Dinars

Fund Capital: Variable

Fund Capital Range: KD 5 Million to KD 50 Million

Fund structure: Open-ended

First public Offering: 22/06/2005

Subscription fees: 2%

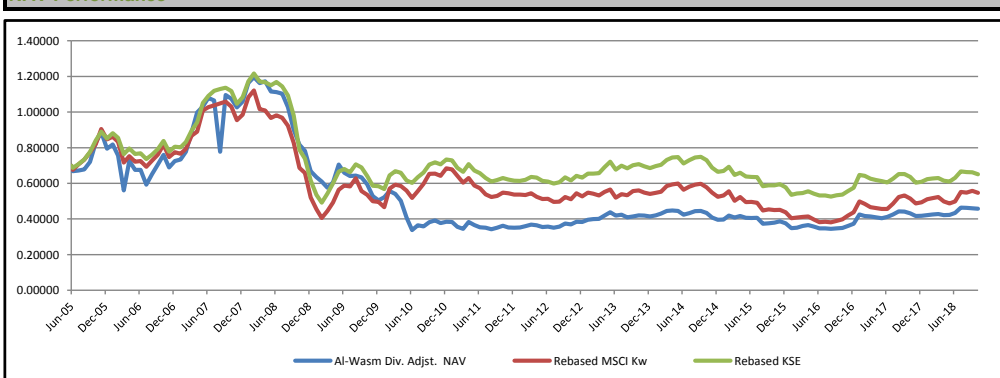
Minimum Subscription 1000 Units

Subscription/Redemption: Weekly

Analysis Start 01/06/2005

Dividends: KD 0.300 P/U on 20/08/2007

NAV Performance

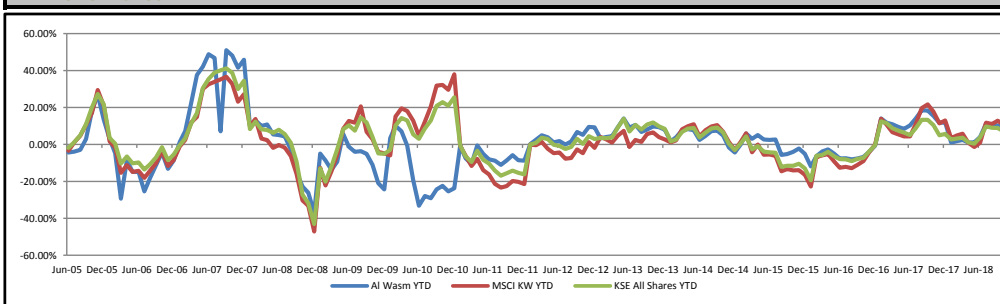


Performance

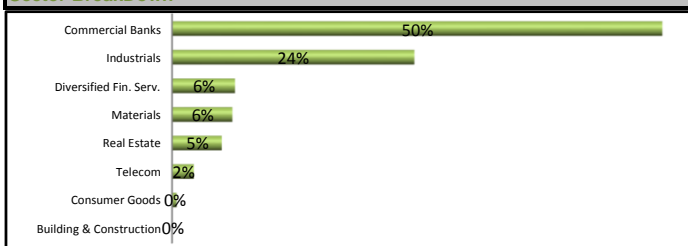
	Yearly	2 Years	3 Years	4 years	5 Years	Since Incpt.
Fund	6.2%	26.9%	18.3%	12.4%	30.1%	-34.5%
KSE All Shares	2.3%	17.1%	9.4%	-5.4%	4.9%	-6.9%
MSCI Kuwait	6.0%	30.4%	21.2%	-0.3%	0.3%	-21.9%

Fund MTD	Jan	Feb	Mar	Apr	May	Jun	Jul	Aug	Sep	Oct	Nov	Dec
2005						-4.4%	0.5%	0.9%	6.1%	14.9%	7.3%	-10.6%
2006	2.9%	-7.5%	-25.9%	29.5%	-7.0%	0.1%	-12.4%	10.1%	8.1%	7.7%	-9.2%	5.2%
2007	1.2%	5.9%	14.2%	12.5%	3.3%	4.7%	-1.4%	-27.1%	41.0%	-1.9%	-4.4%	3.0%
2008	10.0%	2.7%	-2.7%	0.8%	-4.8%	-0.3%	-0.8%	-6.9%	-12.3%	-9.3%	-4.3%	-14.6%
2009	-5.0%	-3.9%	-5.5%	5.1%	16.6%	-6.6%	-2.8%	0.4%	-1.5%	-6.3%	-11.1%	-4.3%
2010	3.4%	6.5%	-2.7%	-7.2%	-18.8%	-17.1%	7.9%	-1.7%	6.7%	2.6%	-3.9%	2.2%
2011	-0.5%	-7.0%	-3.3%	11.2%	-4.6%	-3.1%	-0.8%	-2.6%	2.7%	3.2%	-2.9%	-0.3%
2012	0.2%	2.4%	2.3%	-1.0%	-2.6%	0.6%	-1.8%	1.7%	5.1%	-1.5%	4.1%	-0.2%
2013	3.3%	0.7%	0.5%	4.6%	4.3%	-4.3%	1.3%	-3.4%	1.2%	1.5%	-0.3%	-1.4%
2014	1.7%	2.2%	3.5%	0.6%	-0.5%	-4.8%	2.1%	2.5%	0.2%	-2.5%	-6.1%	-2.8%
2015	0.1%	5.8%	-2.7%	2.1%	-2.4%	-0.2%	0.2%	-8.1%	0.5%	1.2%	1.8%	-3.0%
2016	-7.2%	0.8%	2.8%	1.2%	-2.4%	-2.8%	0.1%	-0.6%	0.5%	0.9%	3.0%	3.5%
2017	14.0%	-2.0%	-0.7%	-1.3%	-1.0%	1.7%	3.4%	3.9%	-0.1%	-2.4%	-3.3%	0.3%
2018	1.0%	0.7%	0.7%	-1.3%	0.0%	2.9%	6.8%	-0.3%	-0.5%	-0.6%		

YTD Performance



Sector BreakDown



Top 5 Holdings

National Bank Of Kuwait
Al-Ahli United Bank (B.S.C)
Kuwait Finance House
Integrated Holding Co.
AGLTY

MARKET REVIEW

Kuwait and Saudi Arabia have resolved their differences over the two joint oil fields capable of producing approximately 500,000 bpd, according to Saudi foreign minister Adel Al-Jubeir.

Kuwait's All Share index decreased by -1.67% mainly led by negative performance from Consumer Goods -5.42%, Telecom -4.55%, and Financial Services -3.13%.

Legal Disclaimer

KFIC Mutual Funds are not deposits in, or obligations of, and are not guaranteed by any financial institutions. The fund is subject to investment risk. The investment return and principal value of an investment in a mutual fund will fluctuate, and an investor's shares when redeemed may be worth more or less than their original cost. Past performance does not guarantee future results.