



Performance Fact Sheet

April, 2019

NAV	KWD 0.5209	Performance	Fund	Benchmark	Concentrations	Fund	Benchmark
		MTD	1.72%	2.22%	Total Holdings	19	163
		QTD	12.28%	11.67%	Top 5 Holdings %	60%	51%
		YTD	14.82%	14.49%	Cash Holdings	2.7%	N/A

Fund Size **KWD 2.994 Mn**

RISK METRICS	Fund	Benchmark
Volatility	25.18%	16.88%
Sharp Ratio	-0.138	-0.125
Tracking Error		14.97%
Information Ratio		0.087
Alpha (MTD)		2.37%
Beta (MTD)		0.963
Alpha (Annual)		-0.037
Beta (Annual)		0.930
Risk Free Rate		3.00%

FUND OBJECTIVE:

The fund seeks to achieve medium to long-term capital appreciation in shares of companies listed on the Kuwait Stock Exchange and shares of companies seeking listing. The Fund manager, in achieving the Fund's objectives may also invest in shares of companies not listed on the Kuwait Stock Exchange up-to 10% of the Fund Net Asset Value.

PARAMETERS & FUND DETAILS

Fund manager
Kuwait Finance and Investment Company

Fund Manager's Management Fees:

1.25% per annum

Fund Manager's Incentive Fees:

10% for Over 10% Annual Return

Thomson Reuters Ticker

LP65038256

Bloomberg Ticker

KFIWASM KK

Benchmark

The Fund Does not Follow a specific Index; for performance comparison, KSE ALL SHARE MARKET INDEX TR (Since 01/04/2018) and MSCI KUWAIT INDEX are used

Custodian

Gulf Clearing Company

Fees: 0.075% P. A.

Investment controller

Gulf Clearing Company

Fees: 0.05% P. A.

Share Registrar

Gulf Clearing Company

Fees: KWD 1,000 P.A.

Auditors

Price Waterhouse Coopers (AlShatti & Co.)

Fees: KWD 2,500 P.A.

Fund Currency Kuwaiti Dinars

Fund Capital: Variable

Fund Capital Range: KD 5 Million to KD 50 Million

Fund structure: Open-ended

First public Offering: 22/06/2005

Subscription fees: 2%

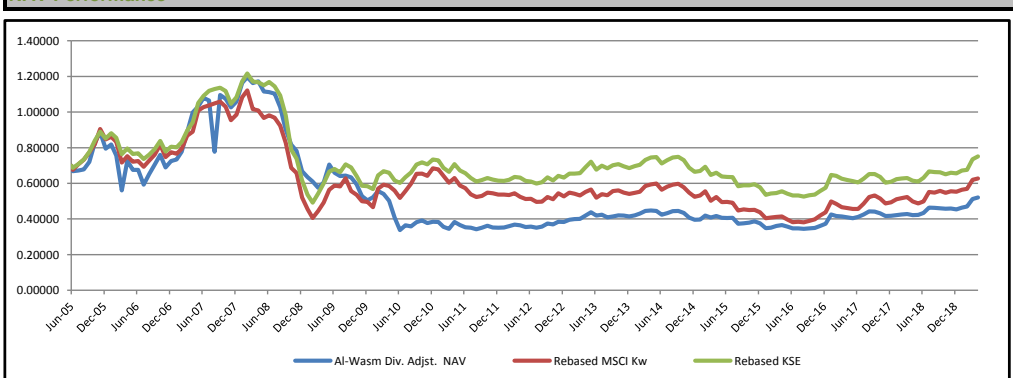
Minimum Subscription 1000 Units

Subscription/Redemption: Weekly

Analysis Start 01/06/2005

Dividends: KD 0.300 P/U on 20/08/2007

NAV Performance

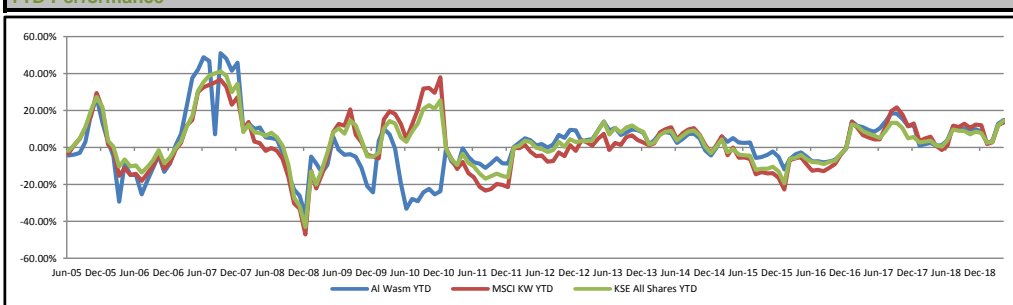


Performance

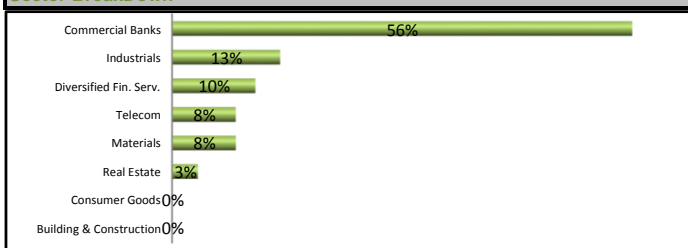
	Yearly	2 Years	3 Years	4 years	5 Years	Since Incpt.
Fund	23.4%	28.8%	46.0%	28.2%	46.8%	-25.5%
KSE All Shares	22.1%	22.5%	38.7%	17.5%	22.5%	7.4%
MSCI Kuwait	26.0%	37.5%	58.0%	27.0%	22.7%	-10.3%

Fund MTD	Jan	Feb	Mar	Apr	May	Jun	Jul	Aug	Sep	Oct	Nov	Dec
2006	2.9%	-7.5%	-25.9%	29.5%	-7.0%	0.1%	-12.4%	10.1%	8.1%	7.7%	-9.2%	5.2%
2007	1.2%	5.9%	14.2%	12.5%	3.3%	4.7%	-1.4%	-27.1%	41.0%	-1.9%	-4.4%	3.0%
2008	10.0%	2.7%	-2.7%	0.8%	-4.8%	-0.3%	-0.8%	-6.9%	-12.3%	-9.3%	-4.3%	-14.6%
2009	-5.0%	-3.9%	-5.5%	5.1%	16.6%	-6.6%	-2.8%	0.4%	-1.5%	-6.3%	-11.1%	-4.3%
2010	3.4%	6.5%	-2.7%	-7.2%	-18.8%	-17.1%	7.9%	-1.7%	6.7%	2.6%	-3.9%	2.2%
2011	-0.5%	-7.0%	-3.3%	11.2%	-4.6%	-3.1%	-0.8%	-2.6%	2.7%	3.2%	-2.9%	-0.3%
2012	0.2%	2.4%	2.3%	-1.0%	-2.6%	0.6%	-1.8%	-1.7%	5.1%	-1.5%	4.1%	-0.2%
2013	3.3%	0.7%	0.5%	4.6%	4.3%	-4.3%	1.3%	-3.4%	1.2%	1.5%	-0.3%	-1.4%
2014	1.7%	2.2%	3.5%	0.6%	-0.5%	-4.8%	2.1%	2.5%	0.2%	-2.5%	-6.1%	-2.8%
2015	0.1%	5.8%	-2.7%	2.1%	-2.4%	-0.2%	0.2%	-8.1%	0.5%	1.2%	1.8%	-3.0%
2016	-7.2%	0.8%	2.8%	1.2%	-2.4%	-2.8%	0.1%	-0.6%	0.5%	0.9%	3.0%	3.5%
2017	14.0%	-2.0%	-0.7%	-1.3%	-1.0%	1.7%	3.4%	3.9%	-0.1%	-2.4%	-3.3%	0.3%
2018	1.0%	0.7%	0.7%	-1.3%	0.0%	2.9%	6.8%	-0.3%	-0.5%	-0.6%	0.3%	-1.2%
2019	2.3%	1.3%	9.0%	1.7%								

YTD Performance



Sector BreakDown



Top 5 Holdings

National Bank Of Kuwait
Kuwait Finance House
National Industries Grp. (Hldg)
Al-Ahli United Bank (B.S.C)
Gulf Bank

MARKET REVIEW

In Kuwait, CMA launches third phase of market development project. The phase will include the complete use of stock lending and borrowing (SLB) and applying short sale conditional on the application of borrowing shares, along with improving off-market trade, introducing an after-hours trading session, and improving the investment fund trading platform. The third phase is an additional step in the market development project, the first phase was completed in May 2017 and the second phase in April 2018.

Kuwait's All Share index rose +0.22% with positive contribution coming from Consumer Goods +4% and Financial Services +2.02%.

Legal Disclaimer

KFIC Mutual Funds are not deposits in, or obligations of, and are not guaranteed by any financial institutions. The fund is subject to investment risk. The investment return and principal value of an investment in a mutual fund will fluctuate, and an investor's shares when redeemed may be worth more or less than their original cost. Past performance does not guarantee future results.