



Performance Fact Sheet

August, 2019

NAV KWD 0.5518

Performance	Fund	Benchmark	Concentrations	Fund	Benchmark
MTD	-3.70%	-2.87%	Total Holdings	13	163
QTD	3.18%	3.82%	Top 5 Holdings %	65%	54%
YTD	21.62%	21.35%	Cash Holdings	11.0%	N/A

Fund Size KWD 3.168 Mn

RISK METRICS	Fund	Benchmark
Volatility	24.95%	16.76%
Sharp Ratio	-0.115	-0.093
Tracking Error		14.79%
Information Ratio		-0.058
Alpha (MTD)		2.52%
Beta (MTD)		0.964
Alpha (Annual)		-0.088
Beta (Annual)		0.935
Risk Free Rate		3.00%

FUND OBJECTIVE:

The fund seeks to achieve medium to long-term capital appreciation in shares of companies listed on the Kuwait Stock Exchange and shares of companies seeking listing.

The Fund manager, in achieving the Fund's objectives may also invest in shares of companies not listed on the Kuwait Stock Exchange up-to 10% of the Fund Net Asset

PARAMETERS & FUND DETAILS

Fund manager
Kuwait Finance and Investment Company

Fund Manager's Management Fees:

1.25% per annum

Fund Manager's Incentive Fees:

10% for Over 10% Annual Return

Thomson Reuters Ticker

LP65038256

Bloomberg Ticker

KFIWASM KK

Benchmark

The Fund Does not Follow a specific Index; for performance comparison, KSE ALL SHARE MARKET INDEX TR (Since 01/04/2018) and MSCI KUWAIT INDEX are used

Custodian

Gulf Clearing Company

Fees: 0.075% P. A.

Investment controller

Gulf Clearing Company

Fees: 0.05% P. A.

Share Registrar

Gulf Clearing Company

Fees: KWD 1,000 P.A.

Auditors

Price Waterhouse Coopers (AlShatti & Co.)

Fees: KWD 2,500 P.A.

Fund Currency Kuwaiti Dinars

Fund Capital: Variable

Fund Capital Range: KD 5 Million to KD 50 Million

Fund structure: Open-ended

First public Offering: 22/06/2005

Subscription fees: 2%

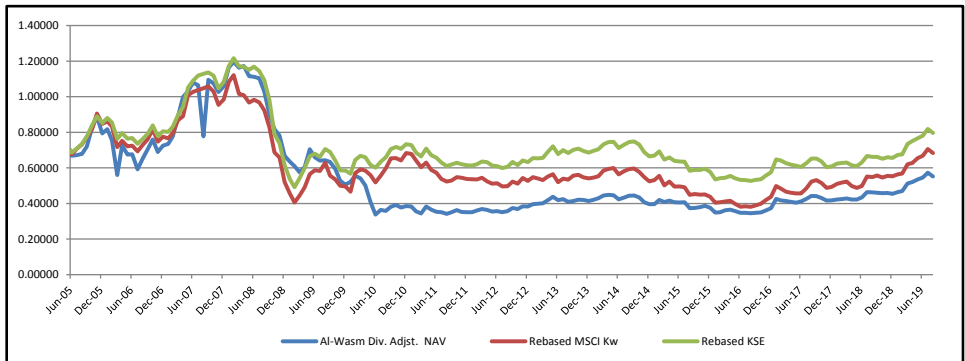
Minimum Subscription 1000 Units

Subscription/Redemption: Weekly

Analysis Start 01/06/2005

Dividends: KD 0.300 P/U on 20/08/2007

NAV Performance

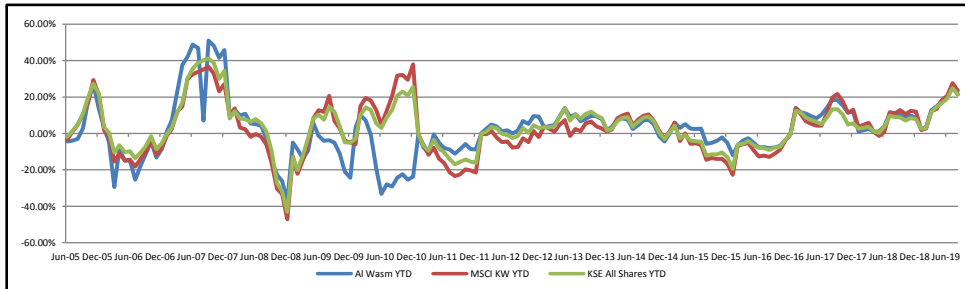


Performance

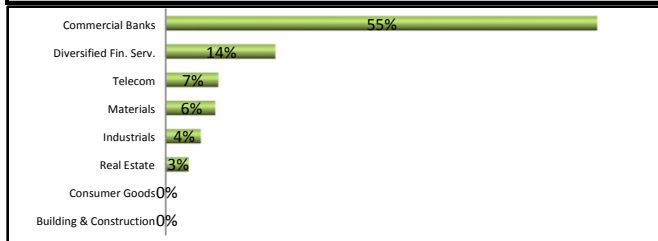
	Yearly	2 Years	3 Years	4 years	5 Years	Since Incpt.
Fund	19.2%	24.9%	59.1%	47.0%	47.2%	-21.1%
KSE All Shares	20.1%	22.0%	49.3%	35.3%	25.7%	13.8%
MSCI Kuwait	24.6%	28.5%	75.7%	50.6%	30.7%	-2.3%

Fund MTD	Jan	Feb	Mar	Apr	May	Jun	Jul	Aug	Sep	Oct	Nov	Dec
2006	2.9%	-7.5%	-25.9%	29.5%	-7.0%	0.1%	-12.4%	10.1%	8.1%	7.7%	-9.2%	5.2%
2007	1.2%	5.9%	14.2%	12.5%	3.3%	4.7%	-1.4%	-27.1%	41.0%	-1.9%	-4.4%	3.0%
2008	10.0%	2.7%	-2.7%	0.8%	-4.8%	-0.3%	-0.8%	-6.9%	-12.3%	-9.3%	-4.3%	-14.6%
2009	-5.0%	-3.9%	-5.5%	5.1%	16.6%	-6.6%	-2.8%	0.4%	-1.5%	-6.3%	-11.1%	-4.3%
2010	3.4%	6.5%	-2.7%	-7.2%	-18.8%	-17.1%	7.9%	-1.7%	6.7%	2.6%	-3.9%	2.2%
2011	-0.5%	-7.0%	-3.3%	11.2%	-4.6%	-3.1%	-0.8%	-2.6%	2.7%	3.2%	-2.9%	-0.3%
2012	0.2%	2.4%	2.3%	-1.0%	-2.6%	0.6%	-1.8%	1.7%	5.1%	-1.5%	4.1%	-0.2%
2013	3.3%	0.7%	0.5%	4.6%	4.3%	-4.3%	1.3%	-3.4%	1.2%	1.5%	-0.3%	-1.4%
2014	1.7%	2.2%	3.5%	0.6%	-0.5%	-4.8%	2.1%	2.5%	0.2%	-2.5%	-6.1%	-2.8%
2015	0.1%	5.8%	-2.7%	2.1%	-2.4%	-0.2%	0.2%	-8.1%	0.5%	1.2%	1.8%	-3.0%
2016	-7.2%	0.8%	2.8%	1.2%	-2.4%	-2.8%	0.1%	-0.6%	0.5%	0.9%	3.0%	3.5%
2017	14.0%	-2.0%	-0.7%	-1.3%	-1.0%	1.7%	3.4%	3.9%	-0.1%	-2.4%	-3.3%	0.3%
2018	1.0%	0.7%	0.7%	-1.3%	0.0%	2.9%	6.8%	-0.3%	-0.5%	-0.6%	0.3%	-1.2%
2019	2.3%	1.3%	9.0%	1.7%	2.7%	2.1%	4.9%	-3.7%				

YTD Performance



Sector BreakDown



Top 5 Holdings

- National Bank Of Kuwait
- National Industries Grp. (Hldg)
- Kuwait Finance House
- Al-Ahli United Bank (B.S.C)
- Gulf Bank

MARKET REVIEW

Kuwait has awarded USD 358mn worth of contracts for the development of the Al-Mutlaa Residential City, one of the country's most vital housing projects, reported state news agency Kuna. The establishment, completion, and maintenance contract covers the development works of roads and intersections in the residential project, stated the report.

Kuwait's All Share index lost - 2.87% with negative contribution coming from Basic materials -6.65% and Consumer goods -6.10%.

Legal Disclaimer

KFIC Mutual Funds are not deposits in, or obligations of, and are not guaranteed by any financial institutions. The fund is subject to investment risk. The investment return and principal value of an investment in a mutual fund will fluctuate, and an investor's shares when redeemed may be worth more or less than their original cost. Past performance does not guarantee future results.